

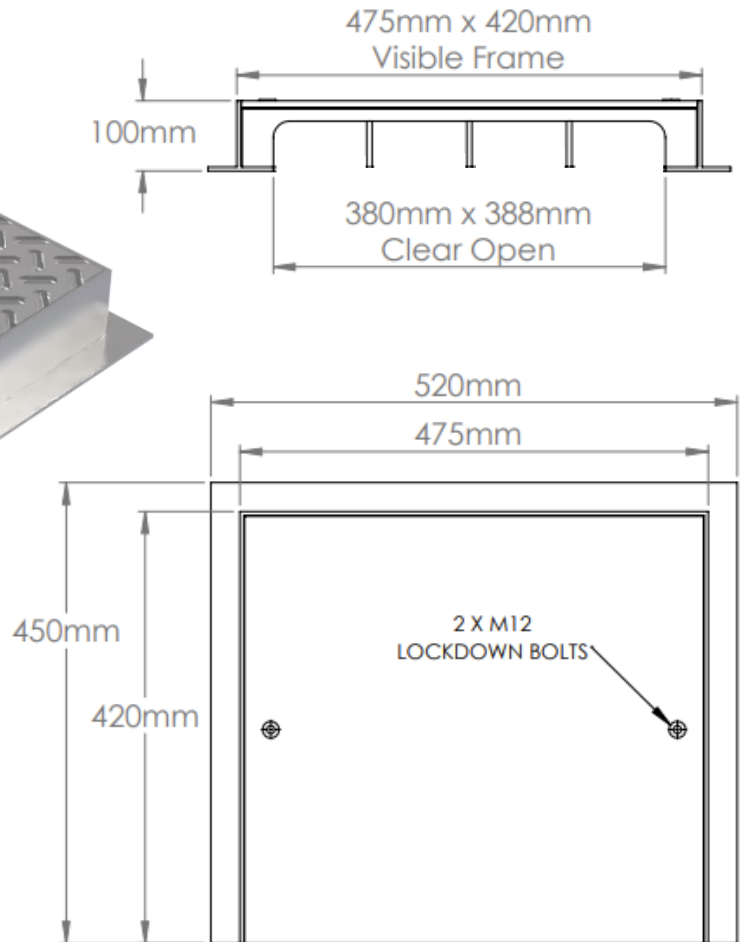
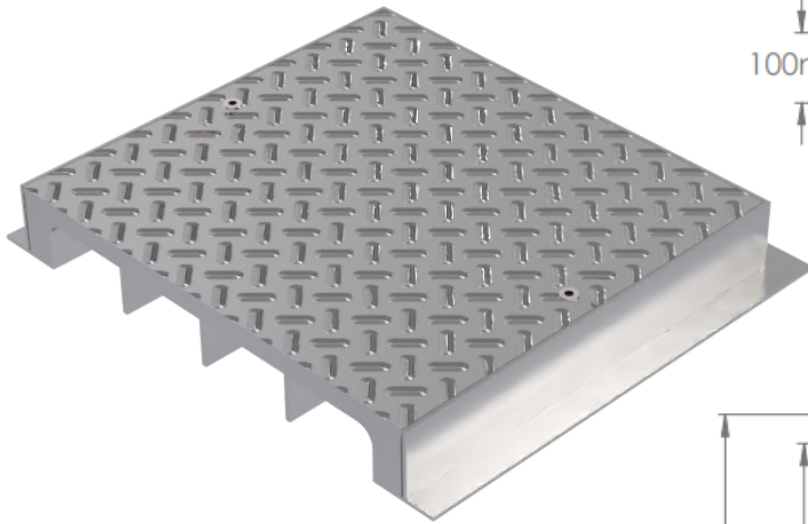
Kent Side Inlet Kerb Gully Manhole Cover—KKG380

This is a Kerb Gully Cover with large side openings for efficient drainage at the kerb side.

As standard it is manufactured in grade 316L stainless steel due to the extensive use of salt in de-icing streetscapes during Winter. Top cover is lockdown and made from slip resistant chequer or tread plate.

- Slip Resistant Chequer Plate
- Lockdown Cover
- 3 Side Perimeter Flange

06/2024



Product Code	Clear Opening	Visible Frame Size	FACTA Class
KKG380	380mm x 388mm	475mm x 420mm	B

Specify: Kent Kerb Gully Manhole KKG380; 380mm x 388mm clear opening; 100mm Tray depth; Unsealed; Grade 316L Stainless Steel; Loading FACTA B

(Amend underlined words to suit project)

This manhole can be specified in any dimension from 300mm to 700mm square clear opening, or any rectangular dimension in between. All 6 load classes describe here can take the point load of the pneumatic tyres of a 44 tonne truck at slow speeds <20mph / 32kph.

FACTA B guarantees a 5 tonne point (250mm diameter pneumatic tyre) load by applying a 101kN test.

EN124 guarantees a 5 tonne point load with a 125kN test.



Car Traffic: 1-3 tonne (Load Class B for Low speeds, D for Motorway speeds)



Heavy Vehicular Traffic—7.5 tonne (Load Class B for low speeds, D for Motorway speeds)



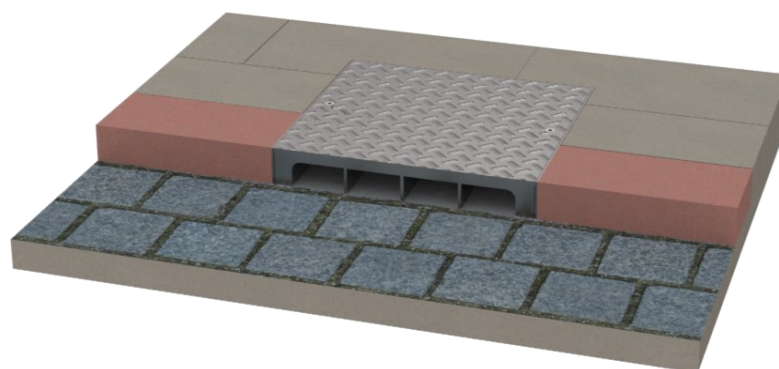
Emergency Vehicle Access—18 tonne (Load Class B for Low speeds, D for Motorway speeds)



Fully Laden HGV—44 tonne (Load Class B for low speeds, D for Motorway speeds)

EN124 Class Available	Load Capacity	Strength Test Load
B125	5T	125kN
C250	6.5T	250kN
D400	11T	400kN

FACTA Class Available	Load Capacity	Strength Test Load
B	5T	101kN
C	6.5T	132kN
D	11T	220kN



This Gully can be installed flush with a kerb or at corners of intersecting paths. Dimensions are customisable to suit project.