

Kent Solo Paver Dish Channel Manhole—KSPDC 600/600

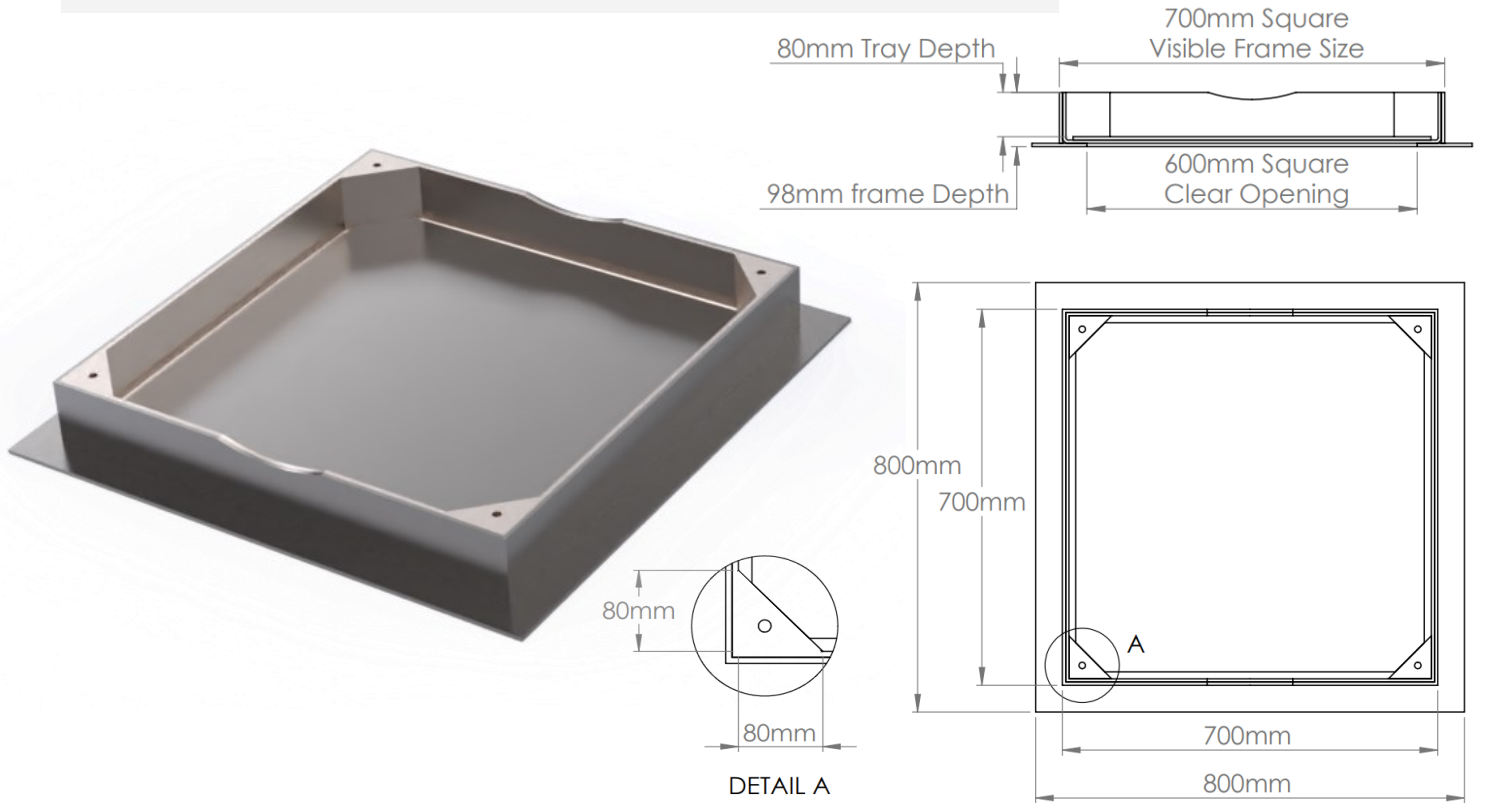
The Kent Solo Paver is a Single Tray Lift Out Recessed Cover designed for paved areas. As standard it is manufactured in grade 316L stainless steel due to the extensive use of salt in de-icing streetscapes during Winter. There is a dip in the metal frame and tray that allow a dish channel to be inserted into the manhole along with desired paving brick. The dimension and position of the dip can be customized for the desired dish channel.

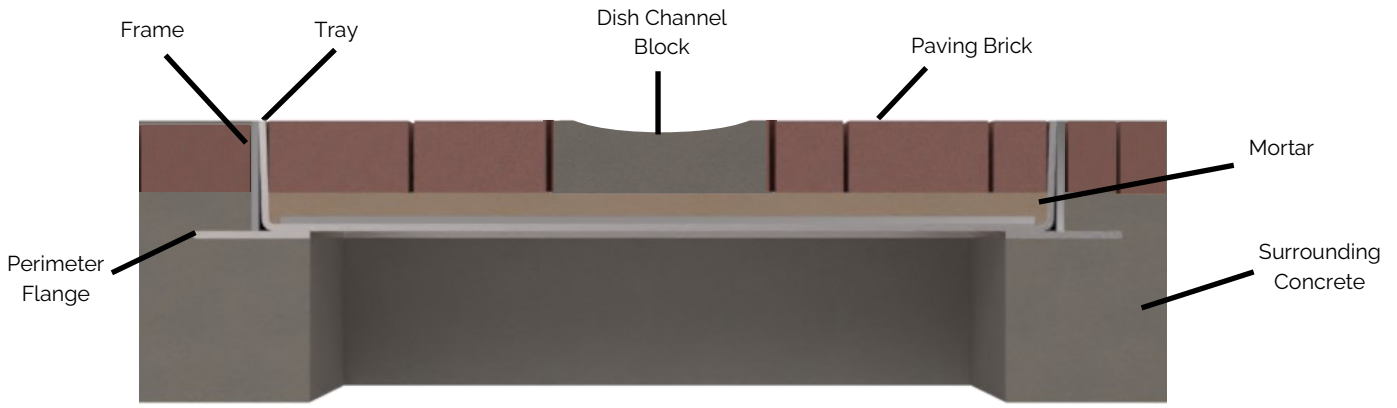
The 80mm internal tray depth on the standard covers will take 50-60mm deep paver slabs or blocks with bedding. A popular optional variation is a 100mm deep tray for 80mm deep blocks and these have occasionally been manufactured with 180mm deep tray for 150mm deep pavers.

As standard a 6mm visible Frame Edge and Tray Edge is included – bespoke variations for architects are regularly fabricated.

- Optional Laser-cut lettering in four corners
- Triangle lifting points aid block cutting
- Identification normally comprises:
 - Manufacturer
 - Loading
 - Year of Manufacture
 - Utility Identification
- Tapered sides to prevent jamming
- Full Perimeter Flange

06/2024





Product Code	Clear Opening	Visible Frame Size	FACTA Class
KSP450	450mm x 450mm	550mm x 550mm	B
KSP600	600mm x 600mm	700mm x 700mm	B
KSP800	700mm x 700mm	800mm x 800mm	B

Specify: Kent Solo Paver Manhole KSP600/600/80; 600mm x 600mm clear opening; 80mm Tray depth; Unsealed; Grade 316L Stainless Steel; Loading FACTA B

(Amend underlined words to suit project)

This manhole can be specified in any dimension from 300mm to 700mm square clear opening, or any rectangular dimension in between. All 6 load classes describe here can take the point load of the pneumatic tyres of a 44 tonne truck at slow speeds <20mph / 30kph

FACTA B guarantees a 5 tonne point (250mm diameter pneumatic tyre) load by applying a 101kN test.

EN124 guarantees a 5 tonne point load with a 125kN test



Car Traffic: 1-3 tonne (Load Class B for low speeds, D for Motorway speeds)



Heavy Vehicular Traffic—7.5 tonne (Load Class B for low speeds, D for Motorway speeds)



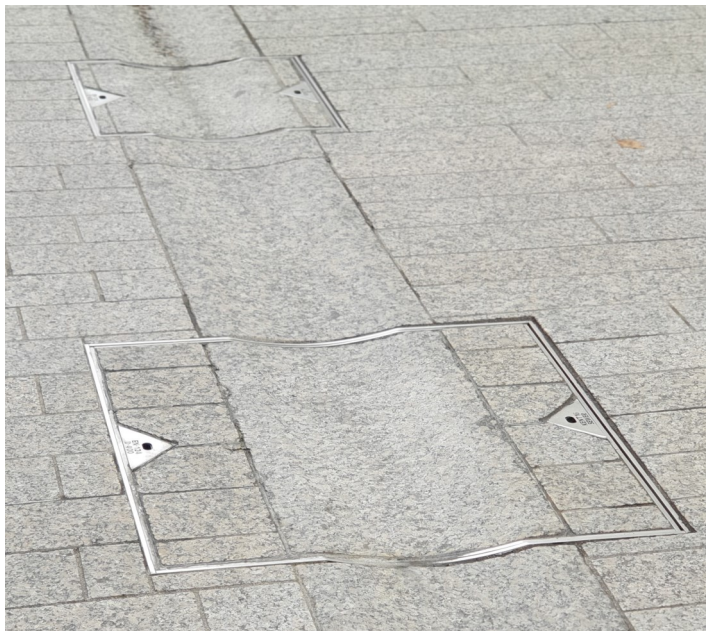
Emergency Vehicle Access—18 tonne (Load Class B for low speeds, D for Motorway speeds)



Fully Laden HGV—44 tonne (Load Class B for low speeds, D for Motorway speeds)

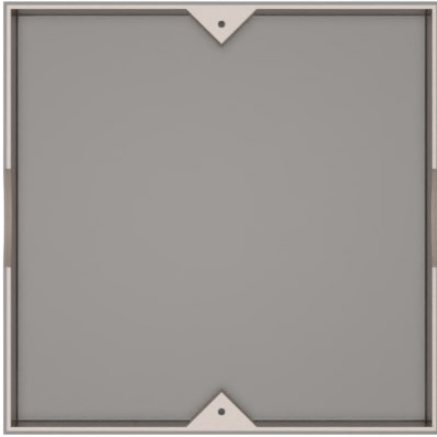
EN124 Class Available	Load Capacity	Strength Test Load
B125	5T	125kN
C250	6.5T	250kN
D400	11T	400kN

FACTA Class Available	Load Capacity	Strength Test Load
B	5T	101kN
C	6.5T	132kN
D	11T	220kN



Lifting Eyes

06/2024



2 Central Triangles



2 Corner Squares



2 Central Circle Barrels



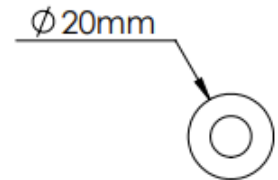
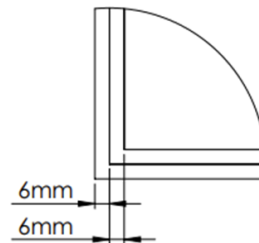
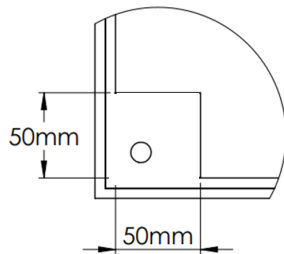
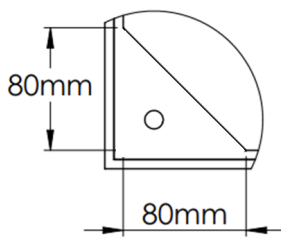
4 Corner Triangles (standard)



4 Corner Squares



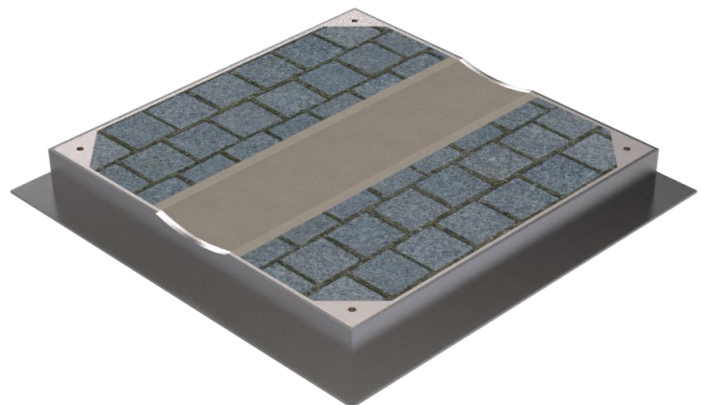
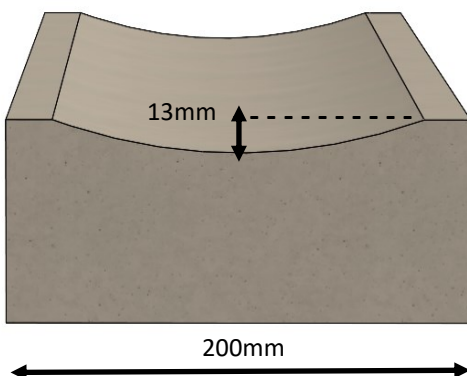
4 Circle Barrels



Lifting Points are most commonly 4 number 80mm x 80mm corners each with an M12 Threaded Lifting Point (12mm diameter thread) containing a protective M12 Grub Screw. They are blank as standard on our ex stock recessed access covers. The 80mm triangles have space for bespoke lettering.

Many prestigious projects move to more discreet lift points with cannot then take lettering - 50mm squares with M12 or 20mm Circles both with M12 Threaded Lifting Points.

Standard Dish Channel





Place of Installation—Shared Surfaces

Given the low speed limits, shared surfaces do not constitute a carriageway but do meet the requirements of pedestrian access as defined in EN124-1 [3.27] "Areas reserved for pedestrians and occasionally open to vehicular traffic for delivery, cleaning purposes or in an emergency.

In theory all FACTA B Manholes Covers and EN124 B125 Covers can take the point load of a wheel from a 44 tonne Heavy Goods Vehicle with a 10.5 tonne axle and 5.25 tonne wheel load—once these vehicles are travelling at <32kph.

The vehicles in these areas should not travel at >32kph, however understanding that the speed is exceeded unexpectedly on occasion, the manholes are often specified as FACTA C / EN124 C250 or FACTA D / EN124 D400. All these load classes can be specified and can be supplied as stainless steel recessed covers. The expense of C or D class may be avoided in many locations where the 20kph speed limit could not be exceeded.

It is likely in this shared surface therefore that FACTA Class D / EN124 Class D400 covers will be used in the central carriageway, then Class C or C250 covers in the parking bays, and Class B or B125 covers in the areas close to the store fronts.



A partner you can rely on