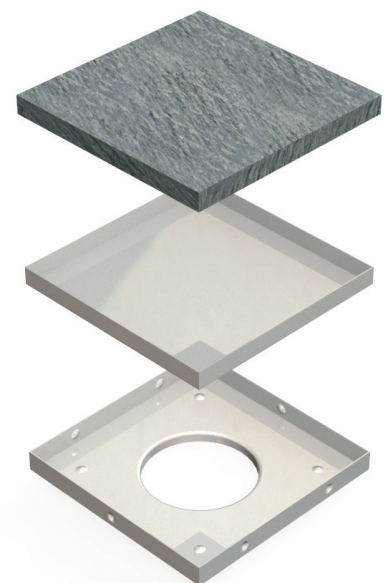
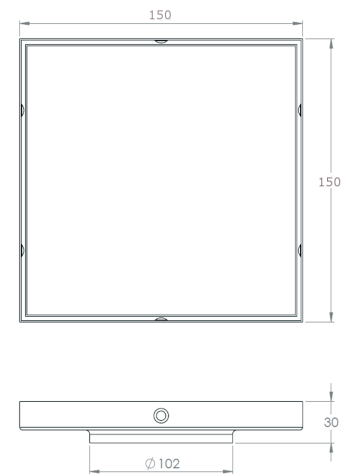
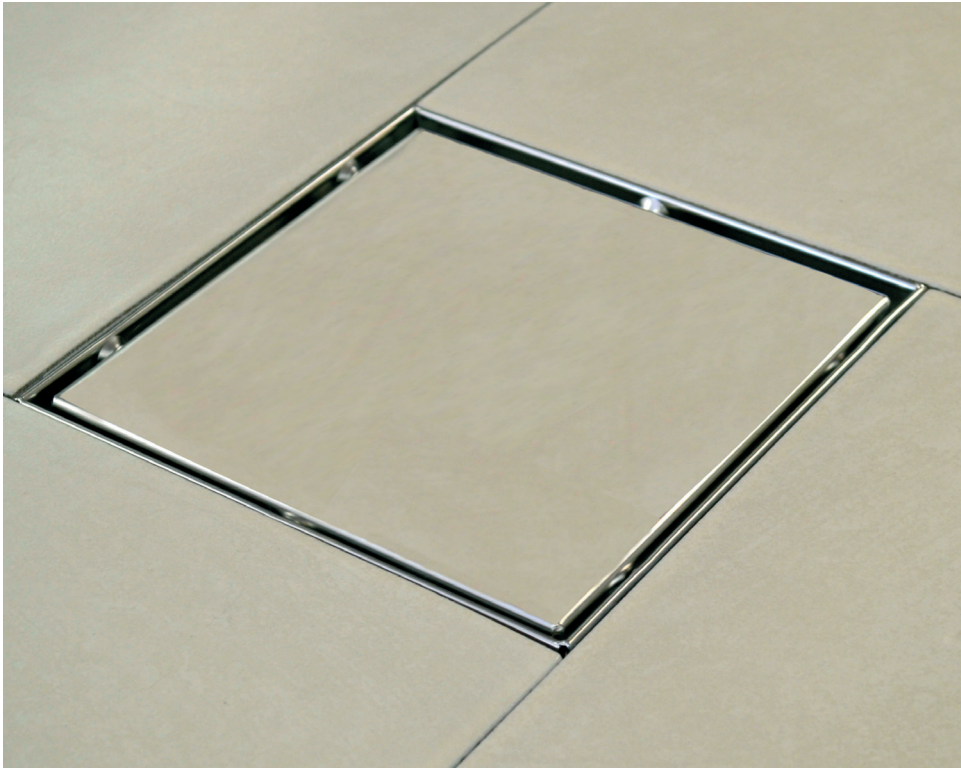


## KENT KTD150/102 – Tile Drain

The Kent Stainless floor drain with tile infill has been developed specifically for the high end residential market. The floor drain can be infilled with a solid tile, or a glass block giving an extra special effect. The floor drains are manufactured in **grade 316 stainless steel** with a satin finish and an 4.0mm drainage slot as standard.

### Features

- Grade 316 Stainless steel
- 102mm diameter
- Mill finish as standard



Product Code	Height	Width	Depth	Outlet	Flow Rate*
KTD 150/102	30mm	150mm	150mm	102mm	1.4 l/s
KTD 200/102	30mm	200mm	200mm	102mm	1.4 l/s

Specify Kent Tile Drain KTD150/102. 150 x 150mm, 2 part floor drain. Grade 316 stainless steel with a mill finish.



BS EN1253 Class K3