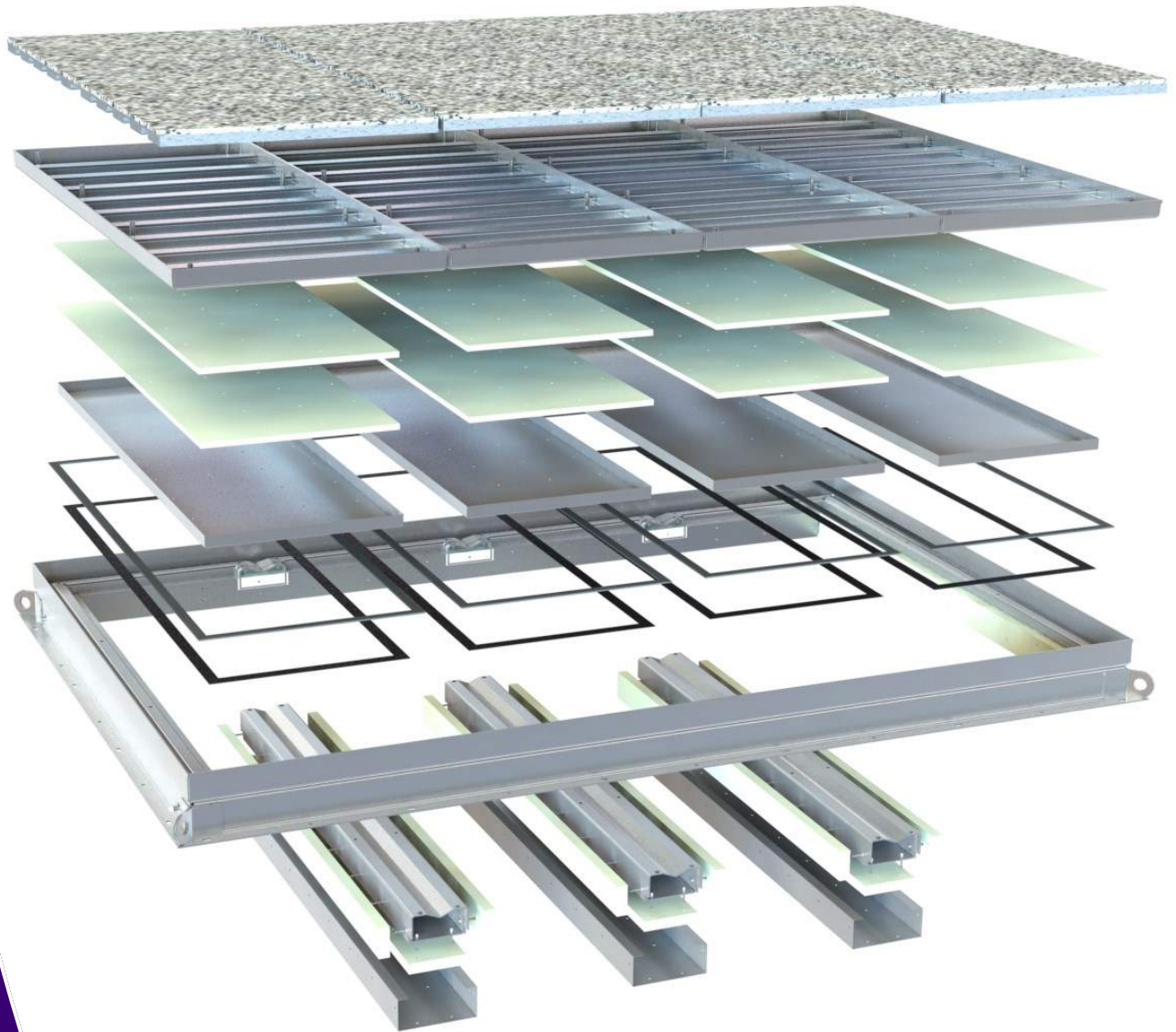


# Kent Multi Tray Fire Rated Access Cover



**Kent**  
STAINLESS

**KENT MULTI TRAY FIRE RATED ACCESS COVER KFRAC1100-4000**

KFRAC1100-4000(4T) is the multi tray lift out version of our Fire Rated Access Covers, designed, manufactured and tested to BSEN 1634-1:2014. 3<sup>rd</sup> Party Tests are carried out Exova Warrington Fire, notified body No. 0833.

Covers are certified to be used with a concrete / tile infill mainly intended for internal use.

Uniquely they can also be used externally with paver blocks for streetscape, pedestrianised precincts.

Their design also makes them watertight by default

A 4000mm x 2500mm clear opening gives a 4370mm X 2870mm visible frame size. While a 4 Tray version is demonstrated here the multi tray can be any multiple of covers 1100 x 2500mm clear opening each. This could be a 2 tray or 20 tray cover – all still covered by the certification once these modules are adhered to.

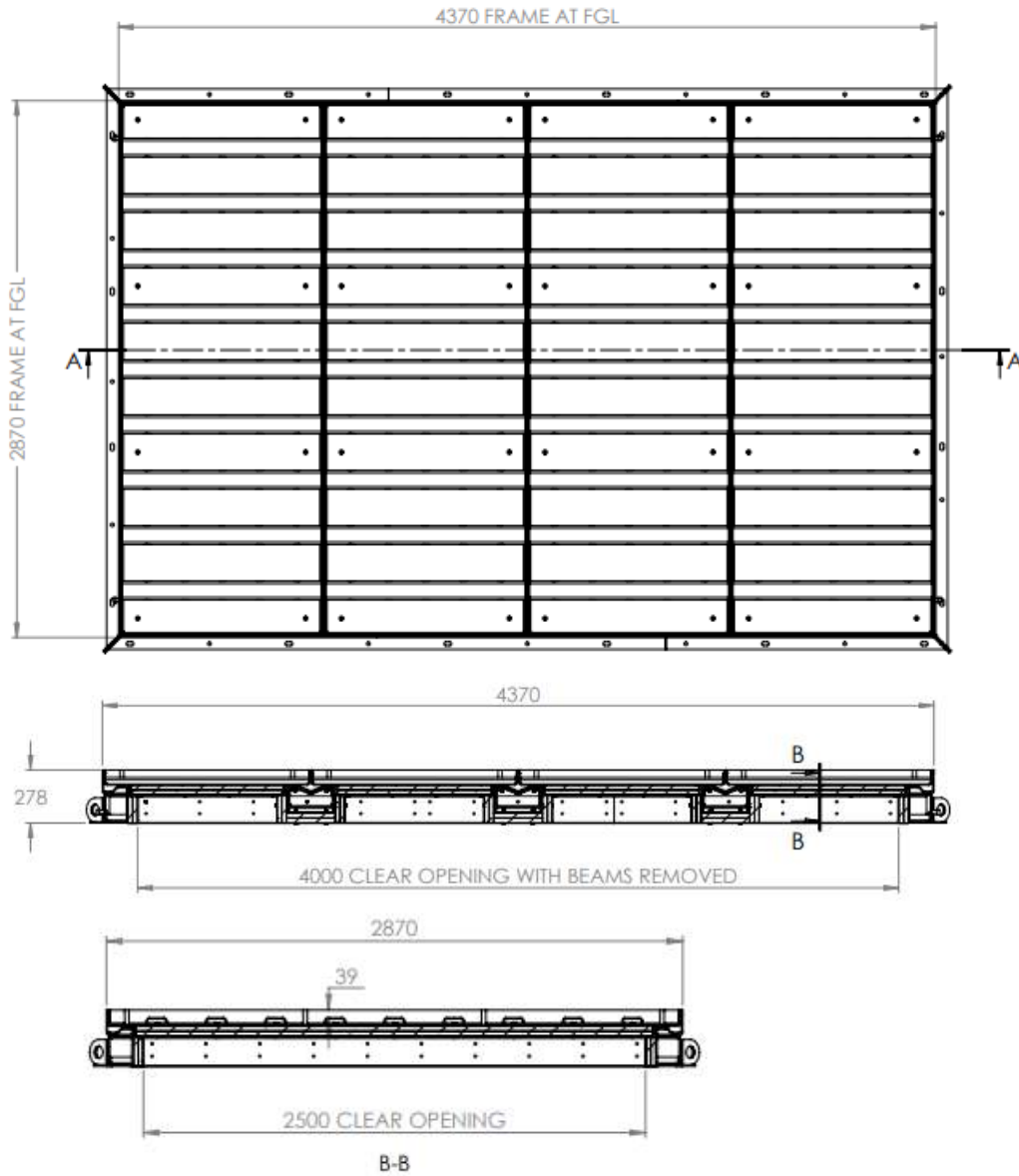
Each individual cover is a large cover for equipment access – a crane is required to lift out the cover and would also be in place to remove or replace the equipment below.

**Features:**

- Grade 316L Stainless Steel
- 120 Minute Fire Rating
- Integrity Rated and Insulation Rated
- Water Tight
- Loading 5kN/m<sup>2</sup>



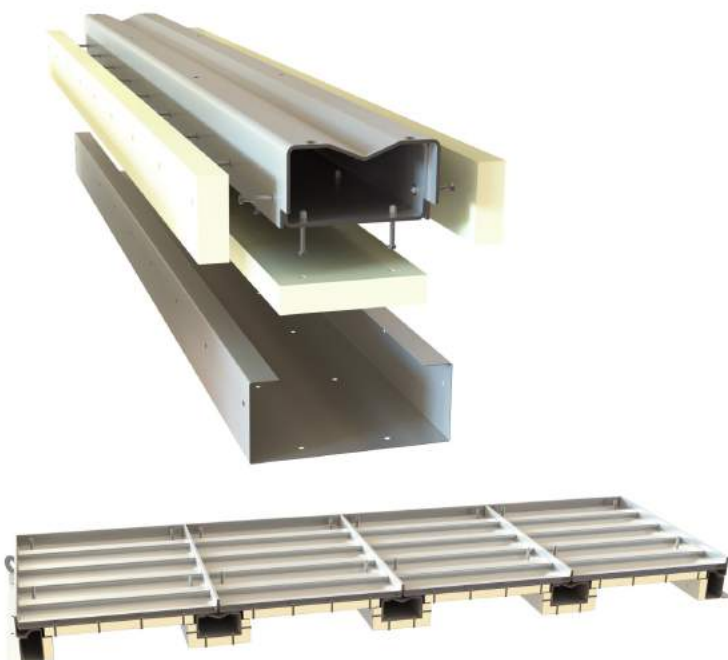
**KENT MULTI TRAY FIRE RATED ACCESS COVER KFRAC1100-4000**



Product Code	Clear Opening	Tray Depth	Overall Depth (∅)	Visible Frame Size
KFRAC2000/2500(4T)	2000mm x 2500mm	80mm	278mm	2370mm x 2870mm
KFRAC3000/2500(4T)	3000mm x 2500mm	80mm	278mm	3370mm x 2870mm
KFRAC4000/2500(2T)	4000mm x 2500mm	80mm	278mm	4370mm x 2870mm
KFRAC5000/2500(4T)	5000mm x 2500mm	80mm	278mm	5370mm x 2870mm
KFRAC6000/2500(3T)	6000mm x 2500mm	80mm	278mm	6370mm x 2870mm
KFRAC7000/2500(4T)	7000mm x 2500mm	80mm	278mm	7370mm x 2870mm
KFRAC8000/2500(4T)	8000mm x 2500mm	80mm	278mm	8370mm x 2870mm
KFRAC9000/2500(10T)	9000mm x 2500mm	80mm	278mm	9370mm x 2870mm
KFRAC10000/2500(4T)	10000mm x 2500mm	80mm	278mm	10370mm x 2870mm

**KENT MULTI TRAY FIRE RATED ACCESS COVER KFRAC1100-4000****Intumescent Seal**

Graphite based intumescent seal, which creates high pressure on expansion. In order to guarantee a secure seal against the spread of smoke and fire, the seal engages at 150°C, ensuring the joints to close quickly to block the spread of smoke and fire.

**Fire Cladding**

With its layers of fireboard cladding on the underside of our covers, these manhole covers provides thermal insulation, noise prevention and are non combustibile according to DIN 4102 and WN 13501, with a shrinkage threshold of 400°C.





**KENT MULTI TRAY FIRE RATED ACCESS COVER KFRAC1100-4000**

**Kent**  
STAINLESS

**3rd Party Certified**

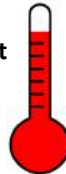
*British Standard*



*Exova Test Report*



150°C  
Intumescent  
Seal  
400°C Fire  
Cladding



*Certifire*



*State of Qatar*



With it's layers of Intumescent Seal these covers have been proven to pass an Integrity Test of 133 minutes when tested with a Flaming Test, a Gap Gauge Test and a Cotton Pad Ignition Test.

In addition, with it's layers of fireboard cladding the underside of our covers, these manhole covers have passed the Insulation Test of 133 minutes.

These tests give it a 120 minute rating.

**I Beam & Bracket Support System**

All Multi tray lift out Manholes and Grilles have a beam system underneath which supports the individual trays. There are two ways in which we supply these support systems. Our technical support team are happy to provide assistance in order to ensure the most suitable option is chosen.

**Type 1: Vertical Wall Mounted Beam Pockets**

These are wall mounted pockets which we supply to the customer which are to be bolted to the retaining wall, underneath the frame. The removable I-Beam then sits in these pockets and supports the loading on the tray or grille above. These pockets are to be bolted into place by the contractor on site

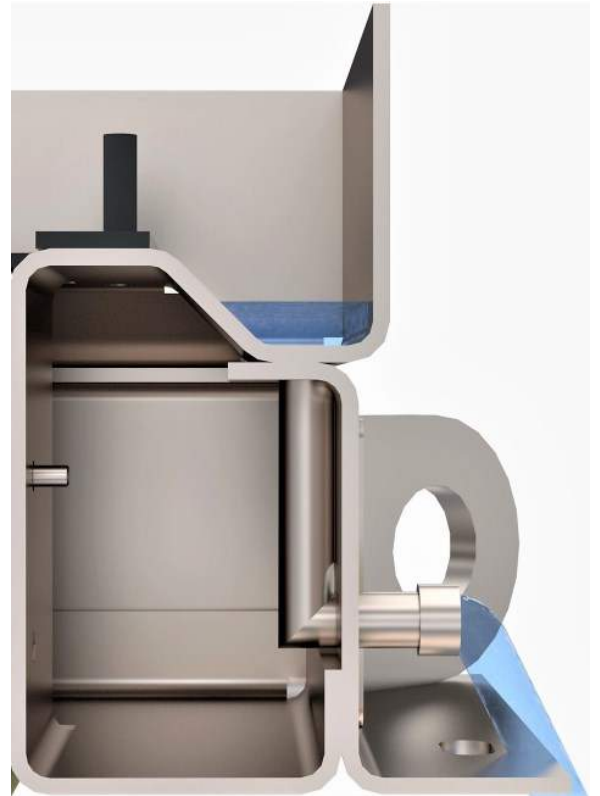
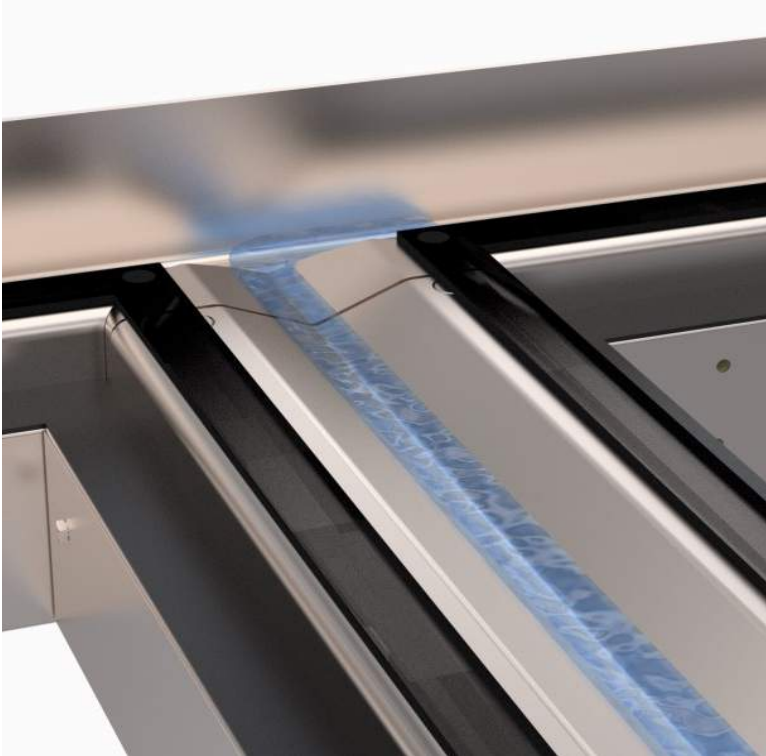
**Type 2: Recessed Beam Pockets**

With this option, recessed pockets are formed in the frame to allow space for the I-Beam to be dropped into place. In this case, both the frame and the I-Beam are supported by the cast concrete of the retaining wall.





### Water Management Channel System



To properly engage to water management channel system the manhole frame has 25mm diameter outlet which must be connected to a positive drainage outlet pipe and not just a soakaway.

**KENT MULTI TRAY FIRE RATED ACCESS COVER KFRAC1100-4000**

Specify



**Specify:**

Kent KFRAC4000/2500(4T) Fire Rated Access Cover; 4000mmx 2500mm clear opening, 4370mm x 2870mm Visible Frame Size; Grade 316L Stainless Steel; Lockdown; Covers Recessed 80mm to take Concrete & Tiles (Alternatively 60mm Deep Pavers with Bedding); Integrated Water Management Channel with 4nr ½" BSP Drainage Points which must be connected to drainage system; 3rd Party Certified to give 120 Minute Fire Rating for Integrity and Insulation (Thermal Transfer); Loading 5kN/m<sup>2</sup> Eurocodes 2; Structural Design to Eurocodes 3

FACTA Class	Slow Moving wheel Loads	Kent Safety Test (Unfilled)
B	5T	10.1T

BSEN124	Slow Moving wheel Loads	Kent Safety Test (Unfilled)
B125	5.0T	12.5T





**Kent Stainless Ltd**

Ardcavan, Wexford, Ireland

**TEL NO:** +353 53 9143216  
**UK FREEPHONE:** 0800 376 8377  
**FAX:** +353 53 9141802  
**WEB:** [www.kentstainless.com](http://www.kentstainless.com)  
**EMAIL:** [info@kentstainless.com](mailto:info@kentstainless.com)

